

Simple & Portable

Particulate Matter (PM2.5) Indicator

PM2.5 Digital Dust Indicator



It helps you measure particulate matter (PM2.5) simply.

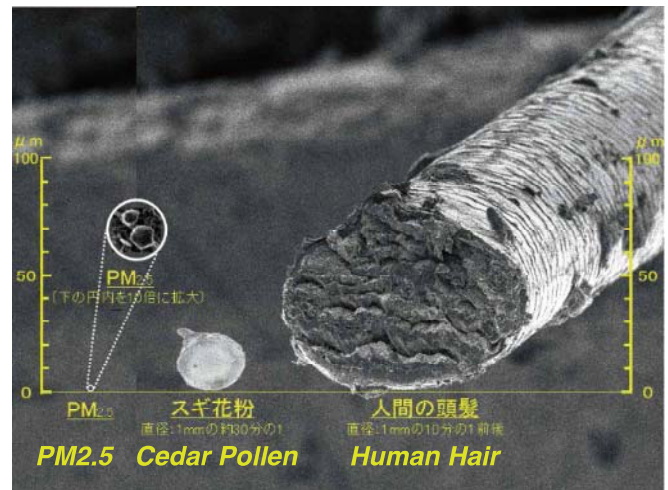
About PM2.5:

It is an airborne particulate matter with aerodynamic diameter of 2.5 micrometer or less.

The fine particle of PM2.5 may easily go deep in the lung, and they say it may cause a respiratory illness such as asthma, bronchitis and also mal-influence to a circulatory system of the human body.

Tentative Guide-line to alert by Ministry of Environment Government of Japan:

Daily average is 70 micrograms per cubic meter, and hourly value is 85 micrograms per cubic meter.



Source: Tokyo Metropolitan Government Web Site

Environmental Standard by Ministry of Environment Government of Japan:

Yearly average is 15 micrograms or less per cubic meter, and daily average is 35 micrograms or less per cubic meter.

By replacing the PM2.5 Cyclone Particle Size Selector with the model LD-5's Standard Air Inlet, you may use the indicator as;

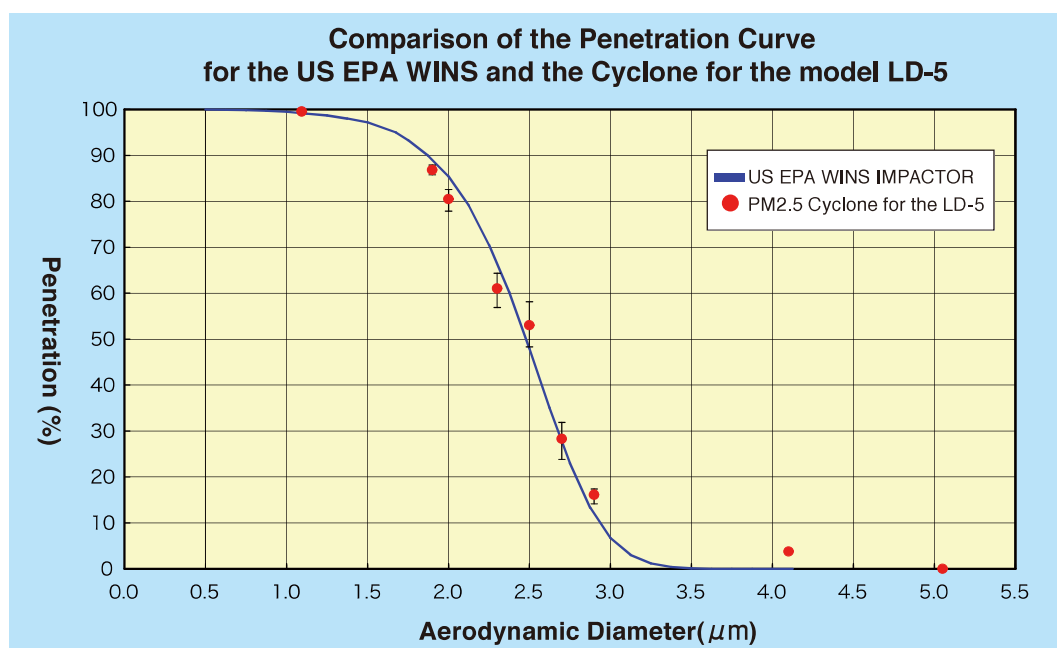
- The tool for 'School Environmental Hygiene' measurement, and also
- The Digital Dust Indicator for general labor environment, and indoor air quality program.

■ Outline

- It is a simple Indicator, focusing on mobility, which measures the concentration of PM2.5 particulate matter floating in the air.
- With its portability, you could measure the concentration of PM2.5 at anywhere, in a short time.
- It is a Digital Dust Indicator, adopting light scattering method, and has PM2.5 Cyclone Particle Size Selector at the air inlet.
- By replacing PM2.5 Cyclone Particle Size Selector with the model LD-5's Standard Air Inlet, you can measure dust measurement of particulate matter for 'School Environmental Hygiene', indoor air quality, labor environment.
- With use of Communication Software, which is supplied as accessory, you can collect and record the measured data under real-time monitoring and logging measurement. (English version is available soon.)

Notes:

- To increase measurement accuracy, you need to calculate mass concentration conversion factor with use of filtration method as the standard, and then convert displayed figure into the mass concentration value.
- The measuring principle is not confirmed to an officially analytical method.
- It is not an all weather type of instrument. Please pay attention when you use it under the rainy or foggy condition.



■ Specifications of PM2.5 Digital Dust Indicator

Measuring principle	Light scattering method
Size classification method	Cyclone method
Operating environment	Temperature : 0 to 40 degrees Celsius Humidity : 5 to 90 percentages (without dew)
Power source	8 pieces of AA type Dry cell battery (operating time: about 10 hours) Option: Nickel-metal hydride battery (operating time: about 8 hours) With AC adaptor for AC100V to 240V, 50/60Hz
Accessories	PM2.5 Cyclone particle size selector, Standard air inlet, AC adaptor, AA type Dry cell battery, Communication software, USB cable 1.5m, Shoulder belt

Notes:

Specifications and appearance described in this document are based on information as of July 3, 2013. They are subject to change without notice for improvement of the product.

The copy right is reserved by Sibata Scientific Technology Ltd.

HONKEI
TECHNOLOGY
漢基科技

漢基科技香港有限公司
HONKEI TECHNOLOGY HONG KONG LIMITED
Tel: (852) 2332 5365 Fax: (852) 2332 5317
Website: <http://www.honkei.com>
E-mail: info@honkei.com

YOUR BUSINESS PARTNER OF ENVIRONMENTAL & LABORATORY INSTRUMENT

SIBATA SCIENTIFIC TECHNOLOGY LTD.

SIBATA

1-1-62, Nakane Soka-City, Saitama, Japan
TEL:+81-48-933-1582 FAX:+81-48-933-1591
E-mail: overseas@sibata.co.jp

<http://www.sibata.co.jp/english/>

201307K